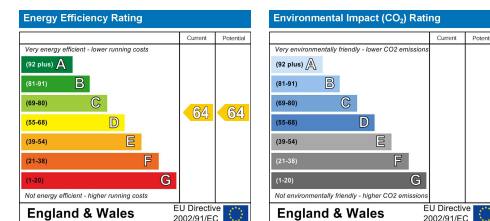


Apartment 63 Corporation Street City Centre, Coventry CV1 1GF

UNIQUE BEAUTIFUL APARTMENT... TWO DOUBLE BEDROOMS... ALLOCATED PARKING SPACE... TENANTED AT £1800PCM... LARGE OUTSIDE TERRACE... MODERN KITCHEN WITH INTEGRATED APPLIANCES... TWO BATHROOMS... OPEN PLAN LIVING... Looking to live in the City Centre or add to your portfolio - then look no further than this beautiful two double bedroom apartment. Briefly comprising of two bathrooms, outdoor socialising terrace, open plan living area with kitchen off fitted with integrated appliances. Within the development is a residents lounge area, exercise area, lift to all floors, secure entry and this apartment has the added benefit of an allocated parking space (bought at considerable cost). Call us now for more information or to book your viewing.

These particulars, whilst believed to be accurate are set out as a general outline only for guidance and do not constitute any part of an offer or contract. Intending purchasers should not rely on them as statements of representation of fact, but must satisfy themselves by inspection or otherwise as to their accuracy. No person in this firm's employment has the authority to make or give any representation or warranty in respect of the property.



CONTACT INFORMATION

24a Warwick Row, Coventry CV1 1EY

02477 170170

info@matthewjames.uk.com

www.matthewjames.uk.com

Facebook

Twitter

Offers Around £280,000

Apartment 63 Corporation Street

City Centre, Coventry CV1 1GF



- NEW APARTMENT
- TWO BATHROOMS
- OPEN PLAN LIVING
- RESIDENTS LOUNGE
- PROFESSIONALLY INTERIOR DESIGNED
- ALLOCATED PARKING SPACE
- TENANTED AT £1800PCM
- TWO DOUBLE BEDROOMS
- ROOF TERRACE
- CITY CENTRE LIVING

Landing

Lounge

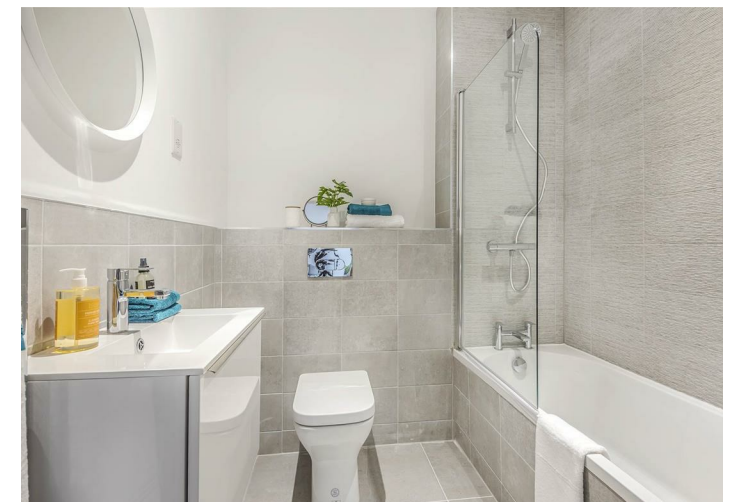
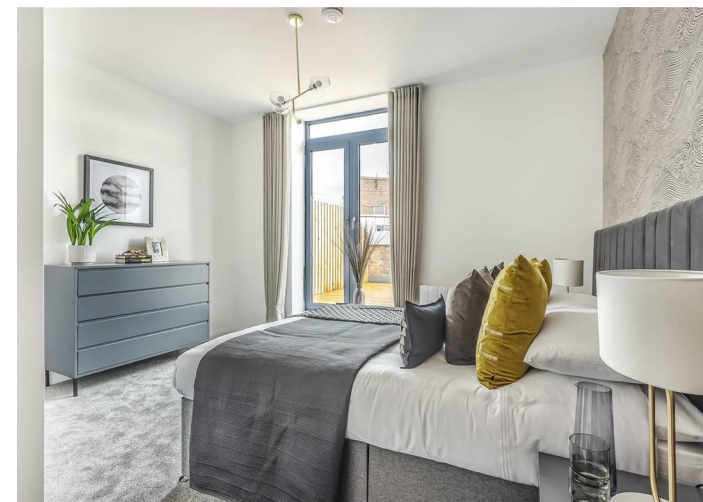
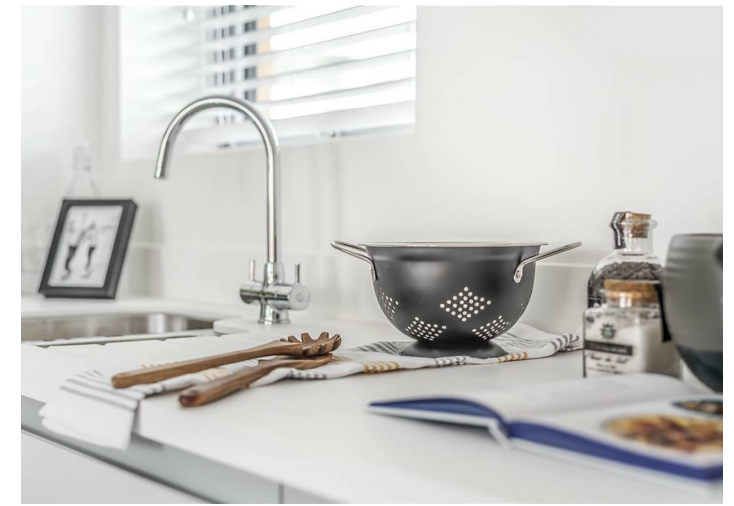
Open Plan Kitchen

Master Bedroom One

Family Bathroom

Double Bedroom

Master En-Suite



Directions

